



Let **UK** Home

**3 Bedrooms**

**Flat**

**Located in London**

**£4,767 Per Month**



[info@letukhome.co.uk](mailto:info@letukhome.co.uk)

<https://www.letukhome.co.uk/>

01795 358 886



# 4B Merchant Square London

W2 1AN



Let UK Home are excited to offer a stunning three bedroom apartment located in the vibrant Paddington Basin area.

This stunning interior designed luxury apartment has three spacious and light bedrooms situated on the First floor of this prestigious building which features a concierge service, lift service and secure underground parking.

This modern apartment comprises of Reception room, an open plan kitchen, three bedrooms, two bathrooms, and ample storage space.

The apartment offers easy access to superb transport links such as Paddington Train Station (Elizabeth line, Bakerloo, Hammersmith & City, Circle, District lines and Heathrow Express) Edgware Road (Circle, District and Bakerloo lines). Additionally, the A40 is just a short drive away, while Paddington station and the bus stop on nearby Edgware Road are within walking distance, so tenants living in this apartment experience no difficulty commuting across the capital.

# 4B Merchant Square London

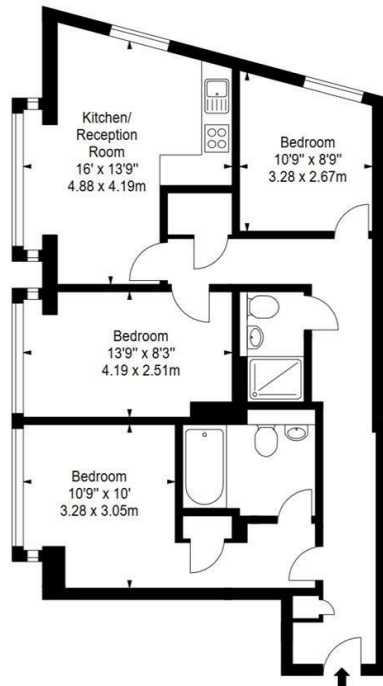
## £4,767 Per Month



- Private underground parking spaces
- Concierge service | Pet Friendly
- 24 hour emergency service
- EPC Rating: B

- Available furnished or unfurnished
- CCTV | Superfast Broadband
- 1st floor





Let **UK** Home

3F 2 Eastbourne Terrace  
 Paddington  
 London  
 W2 6LG

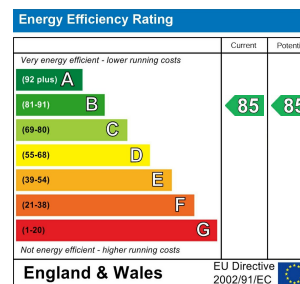
01795 358 886

info@letukhome.co.uk

**Council Tax Band: E**

**Local Authority:**

Agents Note: Whilst every care has been taken to prepare these particulars, they are for guidance purposes only. All measurements are approximate and are for general guidance purposes only and whilst every care has been taken to ensure their accuracy, they should not be relied upon and potential buyers/tenants are advised to recheck the measurements.



<https://www.letukhome.co.uk/>